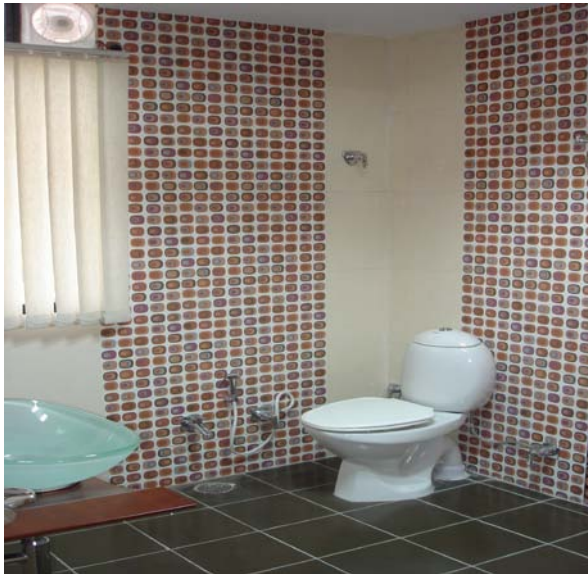




LATAPOXY® SP-100 Stainfree Grout



PRODUCT DESCRIPTION

LATAPOXY SP-100 Stainfree Grout is an epoxy grout specifically designed for use in applications of ceramic tile, Vitrified tile and stone where staining is expected.

Application - COMMERCIAL

- Institutional Kitchens • Cafeterias • Institutional Facilities • Swimming Pools • Restrooms • Schools

Advantages

- Stainfree
- Colour - fast
- Easy to install and clean
- Chemical and temperature
- Non-cracking or powdering
- Water cleanable when fresh

Packaging Components:

LATAPOXY SP-100 is a factory proportioned kit with Resin (Part A), Hardner (Part B), and colored filler powder (Part C).

UNIT	NET WEIGHT
#1/4 th Unit	1.4kg
	5.5 kg

Shelf Life

Factory sealed containers of this product are guaranteed to be of first quality for two (2) years if stored at temperatures >32°F (0°C) and <110° F (43°C).

Limitations

- Light colors may darken slightly from direct UV exposure. Consult with LATICRETE Technical Services for specific exterior recommendations.

- For industrial applications exposed to high concentrations of food and mineral acids and to high heat, use LATAPOXY® 2000 Industrial Epoxy Grout
- Maximum stain resistance is achieved 10 days after installation. Protect from exposure to acids and strong cleaners during this period
- Not recommended for soft, polished marble or delicate glazed tiles.
- Adhesives/mastics, mortars and grouts for ceramic tile, pavers, brick and stone are not replacements for waterproof membranes. When a waterproof membrane is required, use a LATICRETE Waterproof Membrane

Cautions

- During cold weather, protect finished work from traffic until fully cured.
- Until cured, LATAPOXY SP-100 Stain free Grout may irritate eyes and skin. Avoid contact with eyes and or prolonged contact with skin. In case of contact, flush thoroughly with water.
- May irritate eyes and skin. Avoid contact with eyes or prolonged contact with skin. In case of contact, flush thoroughly with water.
- Do not take internally. Silica sand may cause cancer or serious lung problems. Avoid breathing dust. Wear a respirator in dusty areas.
- Keep out of reach of children.

TECHNICAL DATA

Applicable Standard

ANSI A118.3 - 1999

Physical Properties

TEST	Test Method	RESULTS
Water Cleanability	ANSI A 118.3 1999; E 5.1	(>80 min)
Water Absorption	ANSI A 118.6 1999; H 4.4	0.4%
Initial Setting Time	ANSI A 118.3 1999; E 5.2	3 hours 30 min
Service Setting Time	ANSI A 118.3 1999; E 5.2	(<7 days)
Linear Shrinkage	ANSI A 118.3 1999; E 5.3	> 0.10%
Sag	ANSI A 118.3 1999; E 5.4	no change
Bond strength to quarry tile	ANSI A 118.3 1999; E 5.5	1200 psi (8.2MPa)
Compressive Strength	ANSI A 118.3 1999; E 5.6	7500 psi (51.7MPa)
Tensile Strength	ANSI A 118.3 1999; E 5.7	1500 psi (10.3 MPa)
Thermal Shock	ANSI A 118.3 1999; E 5.8	1100 psi (7.5MPa)

Working Properties

Pot Life	45 minutes
Foot Traffic	24 hours
Heavy Traffic	72 hours
Wet Density	1710 kg/m ³

Specifications subject to change without notification. Results shown are typical but reflect test procedures used. Actual field performance will depend on installation methods and site conditions.

INSTALLATION

Surface Preparation

Before starting to grout, remove debris in grout joints and lightly sponge the tile surface to remove dust and dirt. Do not clean tiles with acid cleaners. Substrate temperature must be between 60°F (16°C and 90°F (32°C).

Mixing - Empty entire contents of LATAPOXY SP-100 Stain free Grout Part "A" and Part "B" jars into a clean mixing pail. Mix with a margin trowel or a slow speed drill mixer until liquids are completely blended. Add at least ¾ of LATAPOXY SP-100 Part "C" Filler Powder and mix to a uniform consistency. Mix as stiff as possible to work into the joints.

Application - Immediately pour entire contents of bucket onto working area. Use a plastic sheet as a drop cloth. Use standard epoxy grouting techniques to work SP-100 Grout into tile joints. SP-100 Grout can also be applied with a caulking gun. Be sure all grout joints are packed full. Remove as much excess material as possible before initial cleaning with grout float. Do not leave excess grout on the face of tiles.

Cleaning

Remove excess grout from the face of the tiles with the edge of the grout float. Hold the float at a 90o angle and pull it diagonally across the joints and tile to avoid pulling out the material. Initial Cleaning: After 30-45 min of the application of the grout scrub the surface of the tile & joint with clean water and scrubber provided to remove any excess grout. Then take a clean thick towel and drag across the tile to remove any residue. Final Cleaning: within 24 hours do a second cleaning with normal soap detergent to remove any haze from the tile.

AVAILABILITY AND COST

Availability

LATICRETE and LATAPOXY ® materials are available worldwide. For distributor information: Telephone: +91-40-30413100 FAX: +91-40-23378784 e-mail: contact@myklaticrete.com

Cost

Contact a LATICRETE Distributor in your area.

MAINTENANCE

LATICRETE and LATAPOXY grouts require routine cleaning with a neutral pH soap and water. All other LATICRETE and LATAPOXY materials require no maintenance but installation performance and durability may depend on properly maintaining products supplied by other manufacturers

WARRANTY

MYK LATICRETE India Pvt Ltd warrants that LATAPOXY ® SP 100 STAINFREE GROUT is free from manufacturing defects and will not break down, deteriorate or disintegrate under normal usage for a period of one (1) year from date of purchase subject to the terms and conditions stated in LATICRETE Product Warranty

TECHNICAL SERVICES

Technical assistance

Information is available by calling the MYK LATICRETE Technical Service at: Telephone: +91-40-30413100 FAX: +91-40-23378784 e-mail: contact@myklaticrete.com

CHEMICAL RESISTANCE CHART at 75°F (23°C)			
CHEMICAL NAME	Continuous Exposure	Intermittent Exposure	Splash Exposure
Milk	R	R	R
**Wine	R	R	R
Ethanol	NR (soft)	R	R
**Potassium Permanganate 10%	NR	R	R
**Potassium Permanganate 1%	R	R	R
Tannic Acid to	R	R	R

50%			
Tartaric Acid to 50%	R	R	R
Phosphoric Acid to 80%	R	R	R
*Sulfuric Acid to 20%	R	R	R
Oxalic Acid to 10%	R	R	R
Lactic Acid to 5%	R	R	R
Acetic Acid to 5%	R	R	R
SodiumHydroxide to 50% Saturated	R	R	R
Benzoic Acid 5%	R	R	R
Sea Water	R	R	R
Fruit Juice	R	R	R
Methanol	NR	NR	R
Mek	NR	NR	R
Chloroform	NR	NR	NR
Methylene Chloride	NR	NR	NR
Toluene	NR	NR	R
Xylene	NR	NR	R

*Chemical Resistance depends on exposure levels:
 Splash - minor spill wiped up quickly such as in a laboratory.
 Intermittent - exposure to chemicals where clean up takes place several times a day such as in a commercial kitchen.
 Continuous - heavy exposure to chemicals where clean up is less frequent such as in an industrial food plant.

R=Recommended, NR=Not Recommended. Chemical Resistance determined in accordance with ASTM C267-1982.

NOTE TO SPECIFIER: Use the constant exposure

Recommendations for intermittent exposure to reagents at temperatures above 90°F (32°C).

NOTES TO SPECIFIER: Use the constant exposure recommendations for intermittent exposure to reagents at temperatures above 90°F (32°C)

MYK Laticrete India Pvt Ltd.

6-3-569/2, First Floor, Kamadhenu Complex
 Rockdale Compound, Somajiguda
 Hyderabad – 500082 (A.P)
 Tel: +91-40-30413100
 Fax: +91-40-23378784
 e-mail: contact@myklaticrete.com
 Website: www.myklaticrete.com

MYKLDS 511.0/Rev08/08

